

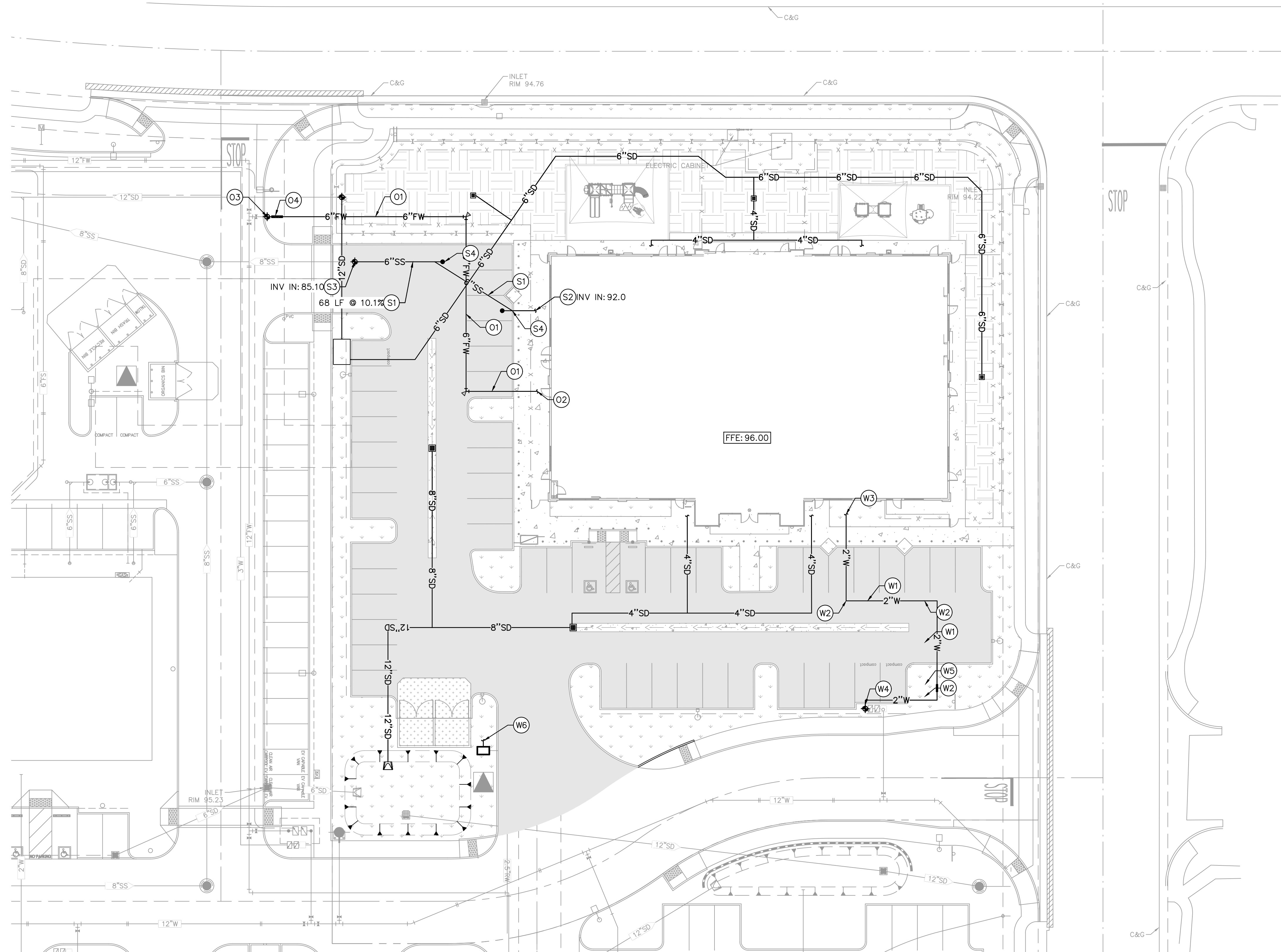
LEGEND	
	PROPERTY LINE
	PROPOSED SANITARY SEWER PIPE
	PROPOSED DOMESTIC WATER PIPE
	PROPOSED FIRE WATER PIPE
	PROPOSED STORM DRAIN

- NOTE**
- REFER TO ARCHITECTURAL/MEP PLANS FOR ALL UTILITY BUILDING CONNECTION POINTS.
 - GENERAL CONTRACTOR SHALL VERIFY ELEVATIONS AND UTILITY CROSSINGS PRIOR TO LAYING PIPE.

SANITARY SEWER NOTES	
KEYNOTE	NOTE DESCRIPTION
S1	INSTALL 6" SDR-35 VCP SEWER LATERAL WITH A SLOPE OF 1.0% MINIMUM. TRENCHING PER CITY OF ROSEVILLE STANDARD DETAIL SS-1, SHEET C10.0.
S2	BUILDING POINT OF CONNECTION (5-FT FROM BUILDING FACE). CONFIRM INVERT ELEVATION PRIOR TO CONSTRUCTION.
S3	CONNECT TO EXISTING SANITARY SEWER LATERAL PER CITY OF ROSEVILLE STANDARD DETAIL SS-4, SHEET C10.0. CONTRACTOR TO VERIFY LOCATION AND INVERT.
S4	INSTALL CLEANOUT PER CITY OF ROSEVILLE STANDARD DETAIL 22-5, SHEET C10.0.

DOMESTIC WATER NOTES	
KEYNOTE	NOTE DESCRIPTION
W1	INSTALL 2" PVC SCHEDULE 40 DOMESTIC WATER PIPE. TRENCHING PER CITY OF ROSEVILLE STANDARD DETAIL W-18, SHEET C10.0.
W2	INSTALL 2" PVC SCHEDULE 40 BEND/TEE.
W3	2" BUILDING POINT OF CONNECTION (5-FT FROM BUILDING FACE).
W4	CONNECT INTO EXISTING WATER METER.
W5	PROPOSED BACKFLOW PER CITY OF ROSEVILLE STANDARDS.
W6	PROPOSED IRRIGATION METER AND CONNECTION TO EXISTING 2.5" RECLAIMED WATER LINE. REFER TO IRRIGATION PLANS FOR MORE INFORMATION.

FIRE WATER NOTES	
KEYNOTE	NOTE DESCRIPTION
O1	PROPOSED 6" FIRE LINE, PER LOCAL FIRE DEPARTMENT STANDARDS.
O2	PROPOSED 6" FIRE LINE BUILDING POINT OF CONNECTION (5-FT FROM BUILDING FACE).
O3	PROPOSED 6" FIRE LINE POINT OF CONNECTION INTO EXISTING WATER LATERAL. VERIFY INVERT ELEVATION AND LOCATION OF MAIN LINE PRIOR TO CONNECTION.
O4	PROPOSED 6" WILKINS 350 DCDA WITH PIV AND FDC. COORDINATE INSTALL WITH LOCAL FIRE DEPARTMENT.



Plotted By: Francisco, Francisco - Sheet Set: Kthb - Layout: C10.0 UTILITY PLAN - January 26, 2022 01:47:07pm
 This document, together with the concepts and designs presented herein, is intended only for the specific purpose and client for which it was prepared. No part of this document without written authorization and signature by Kimley-Horn and Associates, Inc. shall be without liability to Kimley-Horn and Associates, Inc.



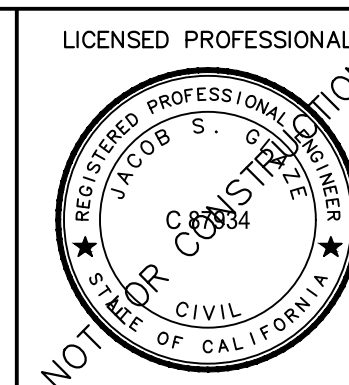
No.	REVISIONS	DATE	BY

Kimley»Horn

© 2022 KIMLEY-HORN AND ASSOCIATES, INC.
 1100 W TOWN AND COUNTRY ROAD, SUITE 700,
 ORANGE, CA 92668
 PHONE: 714-939-1030 FAX: 714-938-9488
 WWW.KIMLEY-HORN.COM

KHA PROJECT 194378001
DATE 1/26/22
SCALE AS SHOWN
DESIGNED BY RWA
DRAWN BY RWA
CHECKED BY JSG

GODDARD SCHOOL
 2801 OAK MEADOW DR
 PLAZA AT BLUE OAKS

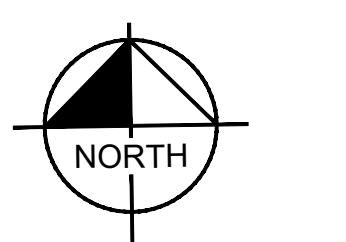


CA

CITY OF ROSEVILLE
 DEPT. OF DEVELOPMENT SERVICES

ACCEPTED BY: _____

CIVIL ENGINEER _____ DATE _____



GRAPHIC SCALE IN FEET
 0 10 20 40
 SCALE: 1" = 20'
 WHEN PRINTED AT FULL
 SIZE 30"x42"

UTILITY PLAN

SHEET NUMBER
C9.0

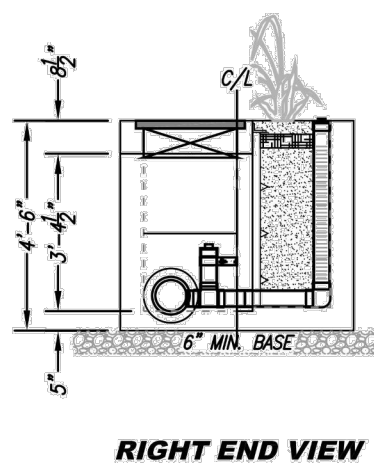
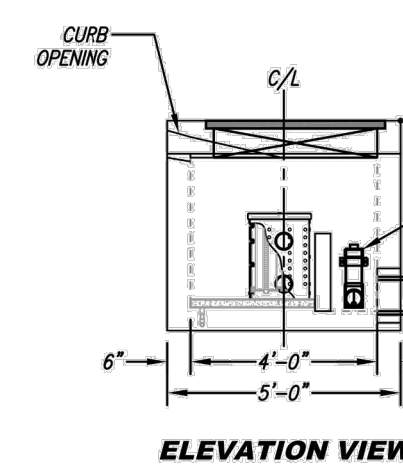
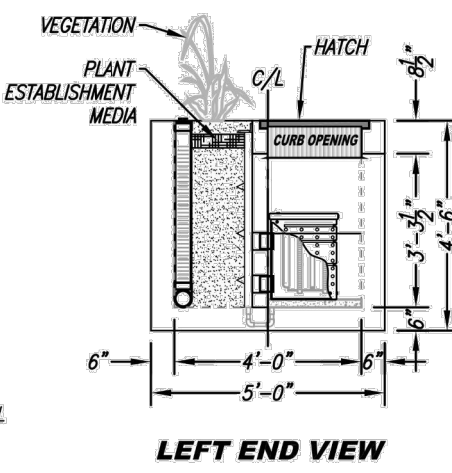
Plotted By: Francisco, Francisco_Sheet Set: kth Layout: C10.0 UTILITY PLAN DETAILS January 26, 2022 01:47:08pm \\kimley-horn.com\CA_ORA_LDEV\AK2\ROSEVILLE\CAD\PlanSheets\CONSTRUCTION DOCUMENTS\C10.0 UTILITY PLAN.dwg

This document, together with the concepts and designs presented herein, is an instrument of service, and shall not be used for any other project without the written authorization and signature of Kimley-Horn and Associates, Inc. Call 811 before you dig.

SITE SPECIFIC DATA	
PROJECT NUMBER	
ORDER NUMBER	
PROJECT NAME	
PROJECT LOCATION	
STRUCTURE ID	
TREATMENT REQUIRED	
VOLUME BASED (CFS)	FLOW BASED (CFS)
TREATMENT VOL. AVAILABLE (FT)	
PEAK BYPASS REQUIRED (CFS) - IF APPLICABLE	
PIPE DATA	I.E. MATERIAL DIAMETER
INLET PIPE 1	
INLET PIPE 2	
OUTLET PIPE	
PRE-TREATMENT	BIOFILTRATION DISCHARGE
R/W ELEVATION	
SURFACE LOAD	PEDESTRIAN OPEN PLANTER PEDESTRIAN
FRAME & COVER	24" x 42" N/A N/A
METLAND MEDIA VOLUME (CY)	TBD
COVER SIZE (DIA. INCHES)	TBD
NOTES:	PRELIMINARY NOT FOR CONSTRUCTION.

- INSTALLATION NOTES**
- CONTRACTOR TO PROVIDE ALL LABOR, EQUIPMENT, MATERIALS AND INCENTIVES REQUIRED TO DIG, LAY AND INSTALL THE SYSTEM AND APPURTENANCES IN ACCORDANCE WITH THIS DRAWING AND THE MANUFACTURER'S SPECIFICATIONS, UNLESS OTHERWISE STATED IN MANUFACTURER'S CONVEYANCE.
 - UNIT MUST BE INSTALLED ON LEVEL BASE. MANUFACTURER'S RECOMMENDS A MINIMUM 6" LEVEL ROCK BASE UNLESS SPECIFIED BY THE PROJECT ENGINEER. CONTRACTOR IS RESPONSIBLE TO VERIFY PROJECT OWNERS RECOMMENDED BASE SPECIFICATIONS.
 - ALL PIPES MUST BE FLUSH WITH INSIDE SURFACE OF CONCRETE. (PIPES CANNOT WITHSTAND BEYOND FLUSH). HEIGHT OF OUTLET PIPE MUST BE FLUSH WITH DISCHARGE CHAMBER FLOOR. ALL CAPS AROUND PIPES SHALL BE SEALED WATER TIGHT WITH A HIGH-SHRECK GROUT PER MANUFACTURER'S STANDARD CONNECTION DETAIL AND SHALL WEET OR EXCEED REGIONAL PIPE CONNECTION STANDARDS.
 - CONTRACTOR TO SUPPLY AND INSTALL ALL EXTERNAL CONNECTING PIPES.
 - CONTRACTOR RESPONSIBLE FOR INSTALLATION OF ALL RISERS, MANHOLES AND HATCHES. CONTRACTOR TO GROUT ALL MANHOLES AND HATCHES TO MATCH FINISHED SURFACE UNLESS SPECIFIED OTHERWISE.
 - GRIP OR SPRAY INSULATION REQUIRED ON ALL UNITS WITH VEGETATION.
 - CONTRACTOR RESPONSIBLE FOR CONCRETING MODULAR METALANS FOR ACTIVATION OF UNIT. MANUFACTURER'S WARRANTY IS VOID WITH OUT PROPER ACTIVATION BY A MODULAR METALANS REPRESENTATIVE.

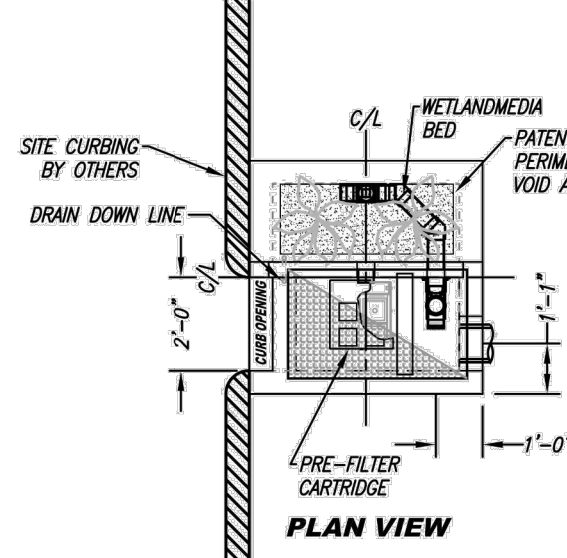
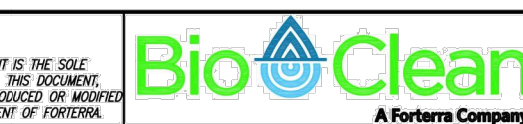
- GENERAL NOTES**
- MANUFACTURER TO PROVIDE ALL MATERIALS UNLESS OTHERWISE NOTED.
 - ALL DIMENSIONS, ELEVATIONS, SPECIFICATIONS AND CAPACITIES ARE SUBJECT TO CHANGE. FOR PROJECT SPECIFIC DRAWINGS DETAILING EXACT DIMENSIONS, WEIGHTS AND ACCESSORIES PLEASE CONTACT MANUFACTURER.



TREATMENT FLOW (CFS)	0.052
OPERATING HEAD (FT)	3.4
PRE-TREATMENT LOADING RATE (GPM/SF)	1.8
WETLAND MEDIA LOADING RATE (GPM/SF)	1.0

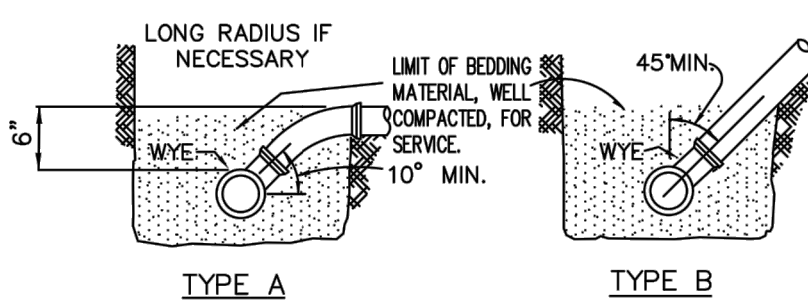
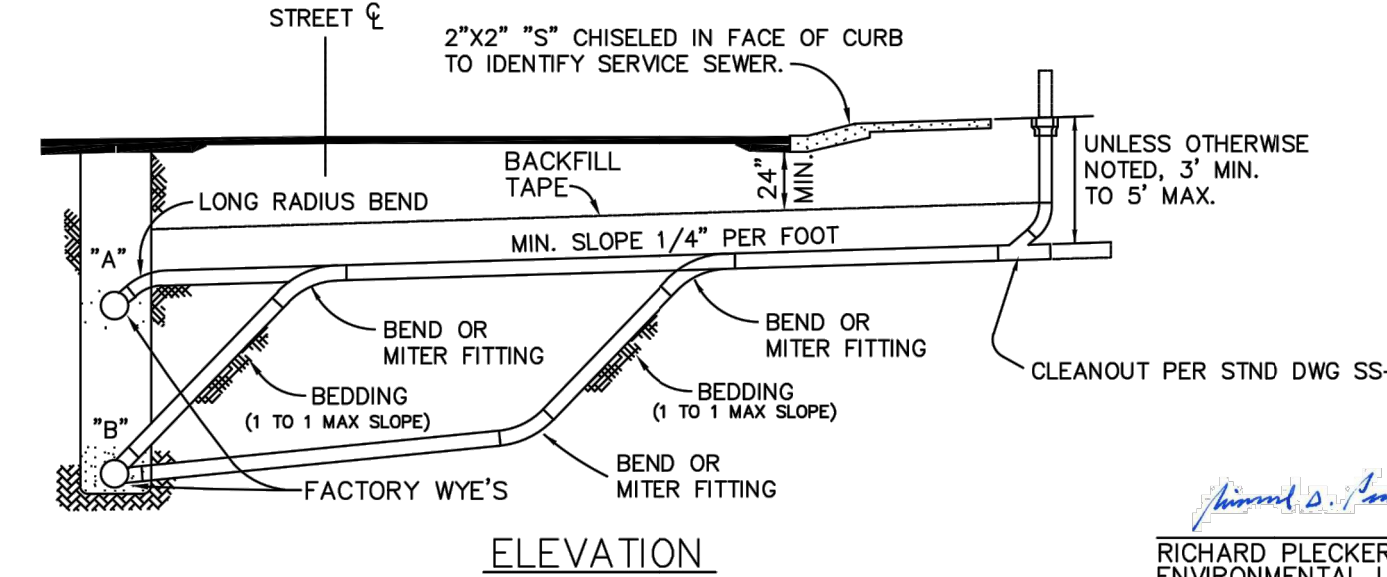


PROPRIETARY AND CONFIDENTIAL. THE INFORMATION CONTAINED IN THIS DOCUMENT IS THE SOLE PROPERTY OF KIMLEY-HORN AND ASSOCIATES, INC. AND IS TO BE USED ONLY FOR THE PROJECT AND SITE SPECIFICALLY IDENTIFIED HEREIN. ANY REUSE OR DISSEMINATION OF THIS INFORMATION WITHOUT THE WRITTEN CONSENT OF KIMLEY-HORN AND ASSOCIATES, INC. IS STRICTLY PROHIBITED.



GENERAL NOTES:

- ALL SERVICE LINES SHALL BE 4" FOR RESIDENTIAL AND 6" FOR COMMERCIAL UNLESS OTHERWISE NOTED.
- SERVICES SHALL HAVE SAME BEDDING AND BACKFILL AS LATERAL SEWER.
- CONTRACTOR SHALL USE THE MOST APPROPRIATE TYPE CONNECTION (A OR B) FOR THE PARTICULAR SITUATION ENCOUNTERED.
- SERVICE SEWER SHALL HAVE MINIMUM 3'-0" COVER AT PROPERTY LINE WHENEVER LATERAL DEPTH AND SERVICE SEWER SLOPE OF 1/4" PER FOOT (MINIMUM) PERMIT. SEE NOTE 10.
- WHEN THE LATERAL SEWER DEPTH IS SUCH THAT MINIMUM COVER AT PROPERTY LINE CANNOT BE MET, THE MINIMUM SLOPE OF 1/4" PER FOOT SHALL GOVERN THE COVER.
- MIN. SPECIFIED COVER AT THE PROPERTY LINE SHALL BE MEASURED FROM EXISTING GROUND SURFACE OR EDGE OF ADJACENT ROADWAY, WHICHEVER IS LOWER.
- A SPECIFIC ELEVATION AT THE PROPERTY LINE, WHEN SHOWN ON THE PLANS OR DESIGNATED BY THE ENGINEER, SHALL GOVERN.
- MITER FITTING SHALL BE MAX. 45°.
- MINIMUM DEPTH OF COVER SHALL BE INCREASED TO 4'-6" WHERE A WATER MAIN IS TO BE INSTALLED AT BACK OF SIDEWALK AS PART OF THE SUBDIVISION IMPROVEMENTS. IN SUCH CASES, THE SERVICE SHALL BE EXTENDED TO A MINIMUM OF 7' BACK OF SIDEWALK; CLEANOUT TO GRADE SHALL REMAIN WITHIN 3' OF BACK OF SIDEWALK.
- SERVICE SERVICES ORIGINATING FROM SEWER MAINS 14' FT AND GREATER IN DEPTH SHALL HAVE THE GROUCH OF THE VCP "WYE" FITTING FILLED WITH CONCRETE.
- UNDERGROUND CONTRACTOR SHALL END SEWER SERVICE 2'-3' UPSTREAM OF SEWER CLEANOUT. SEE STANDARD DETAIL SS-5.



RICHARD PLECKER ENVIRONMENTAL UTILITIES DIRECTOR

ROSEVILLE ENVIRONMENTAL UTILITIES DEPARTMENT

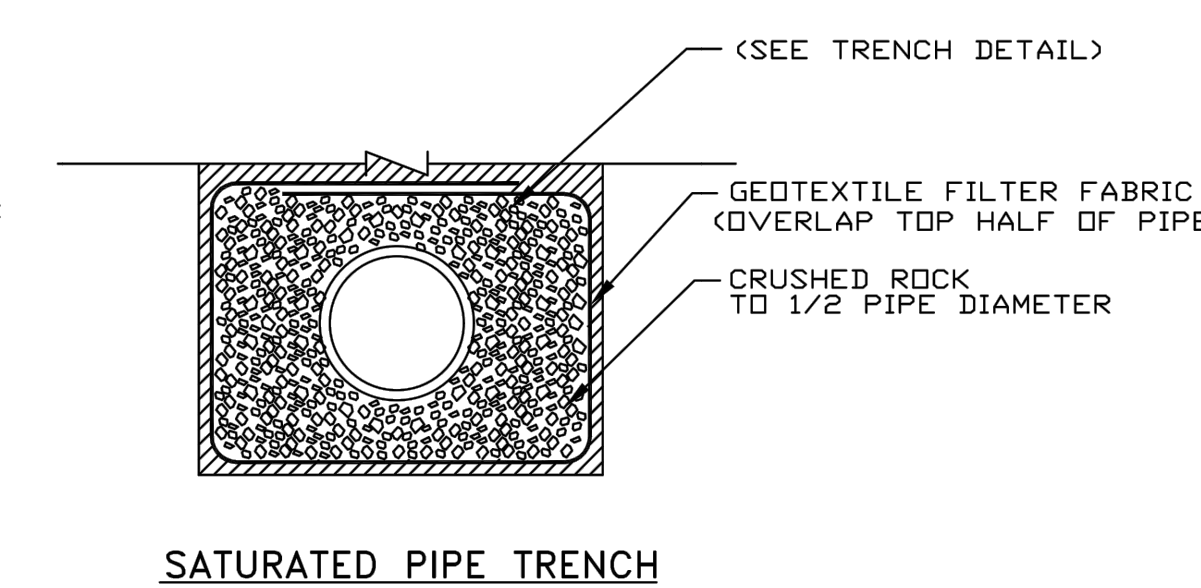
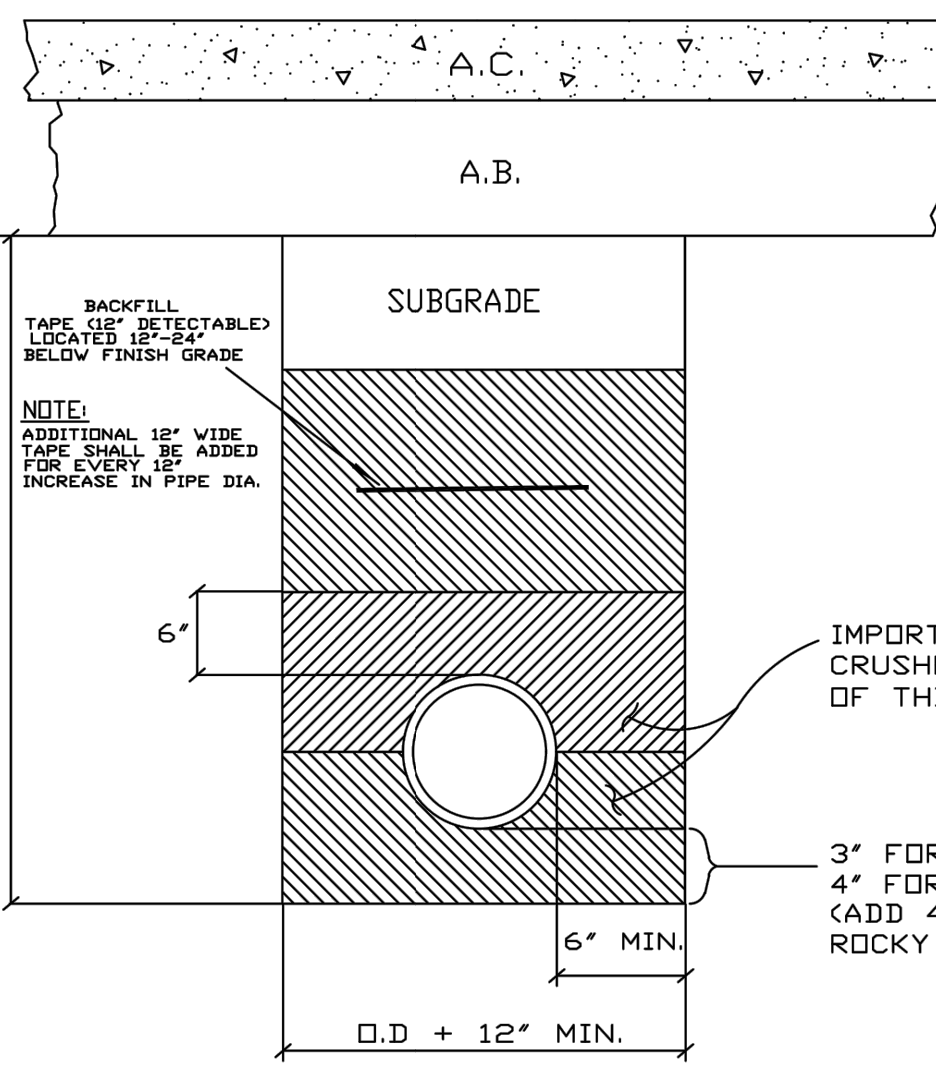
SEWER SERVICE

SCALE: NONE
REVISED: JANUARY 2017
DRAWN BY: R. VAN NESS
APPROVED BY: RICHARD PLECKER

SS-4

TRENCH BACKFILL REQUIREMENTS:

- PROPOSED STREETS- REFER TO DETAIL TB-1 OF SECTION 31 FOR BACKFILL REQUIREMENTS ABOVE THE PIPE ZONE.
- EXISTING STREETS- REFER TO DETAIL TB-1 AND TB-3 OF SECTION 31 FOR BACKFILL REQUIREMENTS ABOVE THE PIPE ZONE.



SATURATED PIPE TRENCH

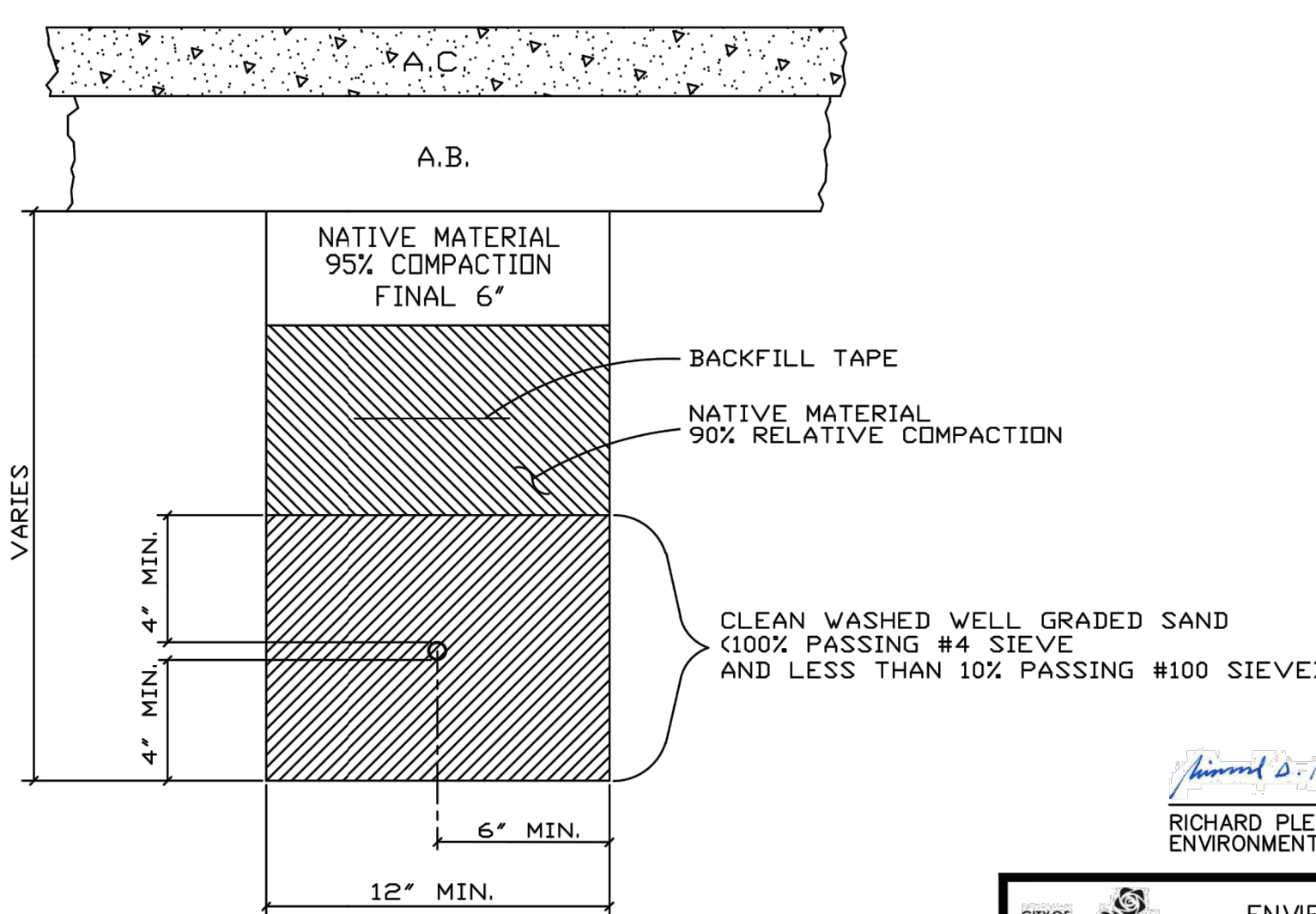
RICHARD PLECKER ENVIRONMENTAL UTILITIES DIRECTOR

ROSEVILLE ENVIRONMENTAL UTILITIES DEPARTMENT

SEWER MAIN TRENCH AND BACKFILL

SCALE: NONE
REVISED: JANUARY 2019
DRAWN BY: R. VAN NESS
APPROVED BY: RICHARD PLECKER

SS-1



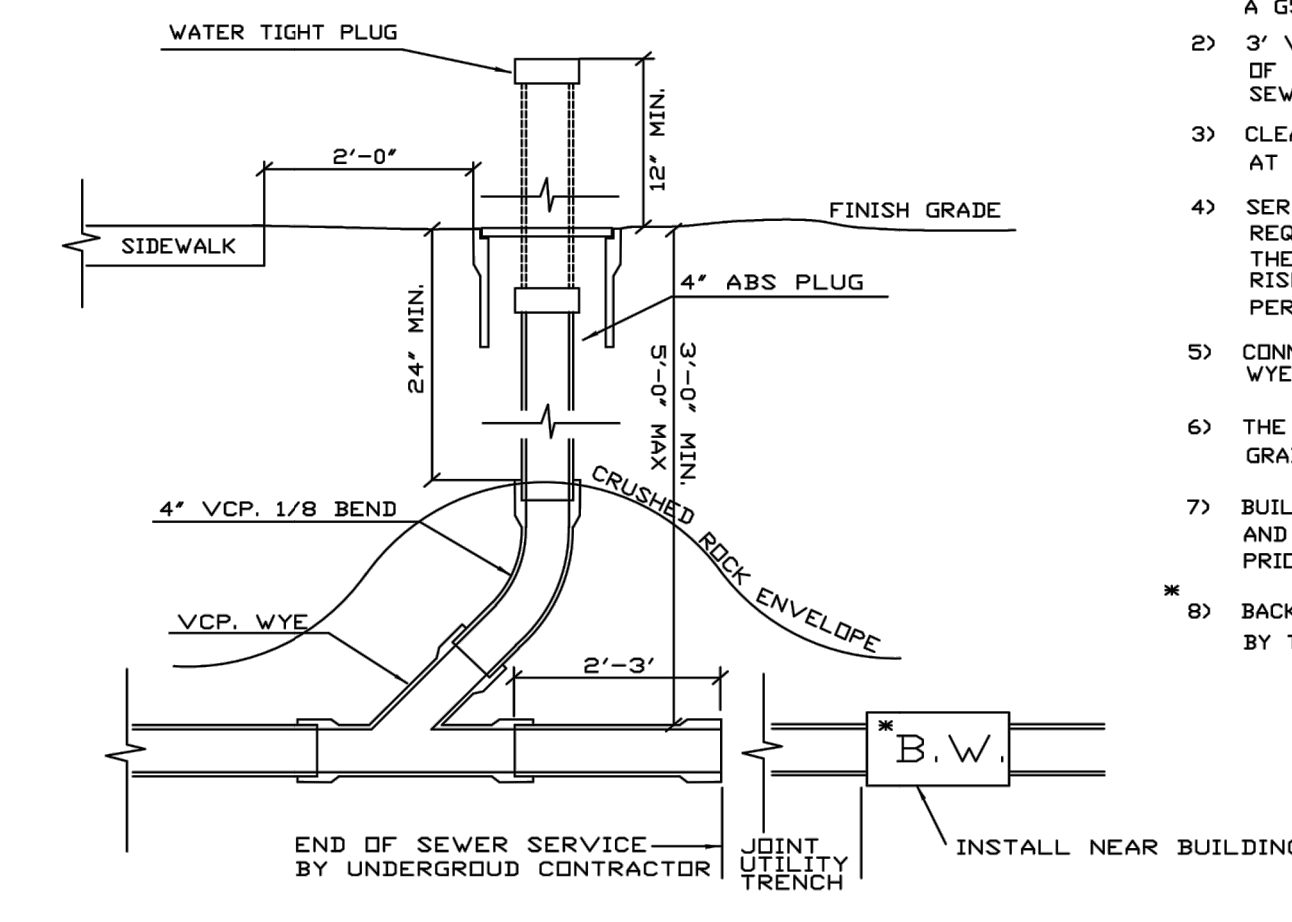
RICHARD PLECKER ENVIRONMENTAL UTILITIES DIRECTOR

ROSEVILLE ENVIRONMENTAL UTILITIES DEPARTMENT

TRENCH AND BACKFILL FOR ALL WATER LINES 2" AND SMALLER

SCALE: NONE
REVISED: JANUARY 2016
DRAWN BY: R. VAN NESS
APPROVED BY: RICHARD PLECKER

W-18



RICHARD PLECKER ENVIRONMENTAL UTILITIES DIRECTOR

ROSEVILLE ENVIRONMENTAL UTILITIES DEPARTMENT

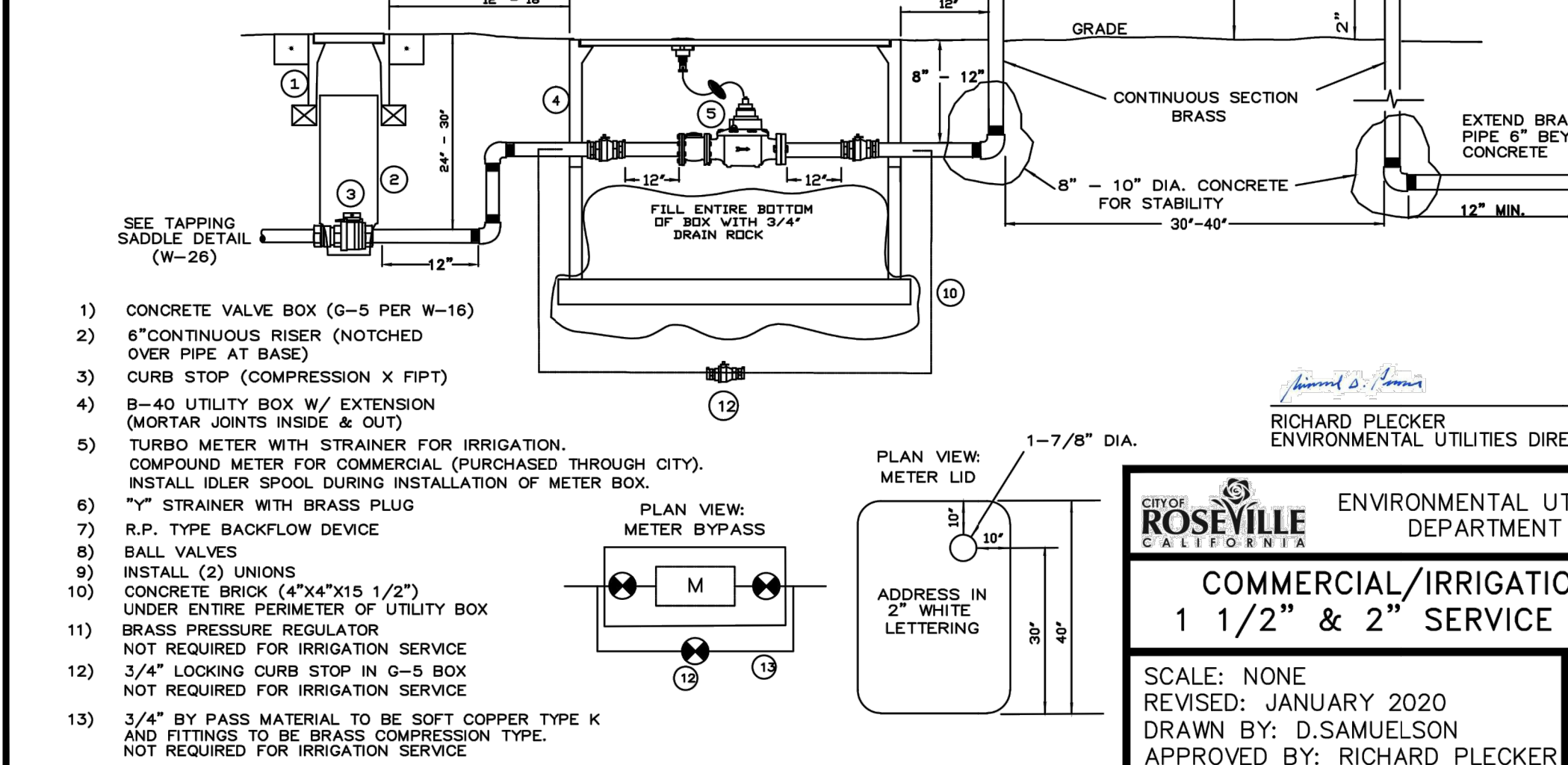
SEWER SERVICE CLEANOUT

SCALE: NONE
REVISED: JANUARY 2020
DRAWN BY: R. VAN NESS
APPROVED BY: RICHARD PLECKER

SS-5

NOTES:

- NO WATER SHALL BE DRAWN THROUGH THE BACKFLOW DEVICE UNTIL IT HAS BEEN TESTED BY THE ENVIRONMENTAL UTILITIES DEPT.
- WATER METERS SHALL BE PURCHASED THROUGH THE CITY. PURCHASE INCLUDES INSTALLATION.
- THE BACKFLOW DEVICE SHALL BE INSULATED WITH A CITY APPROVED FREEZE PROTECTION BAG.
- THERE SHALL BE NO FLOW ALTERING DEVICES 5X THE PIPE DIAMETER UPSTREAM AND DOWNSTREAM OF THE METER.
- CURBSTOP SHALL BE BETWEEN 12" & 18" OF EASEMENT.
- FITTINGS AND PIPING SHALL BE BRASS.
- BURIED PIPE AND FITTINGS SHALL BE WRAPPED WITH 8 MIL POLYETHYLENE OR APPROVED EQUAL.
- PAINT BACKFLOW FOREST GREEN RAL 6004



RICHARD PLECKER ENVIRONMENTAL UTILITIES DIRECTOR

ROSEVILLE ENVIRONMENTAL UTILITIES DEPARTMENT

COMMERCIAL/IRRIGATION 1 1/2" & 2" SERVICE LINE

SCALE: NONE
REVISED: JANUARY 2020
DRAWN BY: D.SAMUELSON
APPROVED BY: RICHARD PLECKER

W-7

CITY OF ROSEVILLE
DEPT. OF DEVELOPMENT SERVICES

ACCEPTED BY:

CIVIL ENGINEER

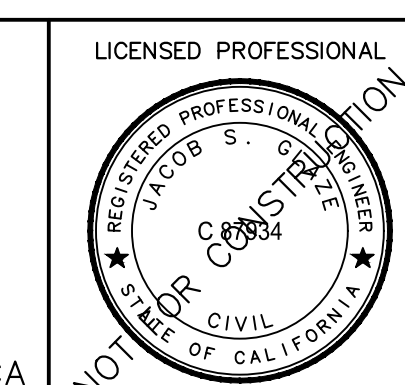
DATE



© 2022 KIMLEY-HORN AND ASSOCIATES, INC.
1100 W TOWN AND COUNTRY ROAD, SUITE 700,
ORANGE, CA 92668
PHONE: 714-939-1030 FAX: 714-938-9488
WWW.KIMLEY-HORN.COM

KHA PROJECT 194378001
DATE 1/26/22
SCALE AS SHOWN
DESIGNED BY RWA
DRAWN BY RWA
CHECKED BY JSG ROSEVILLE

GODDARD SCHOOL
2801 OAK MEADOW DR
PLAZA AT BLUE OAKS



UTILITY PLAN DETAILS

SHEET NUMBER
C10.0